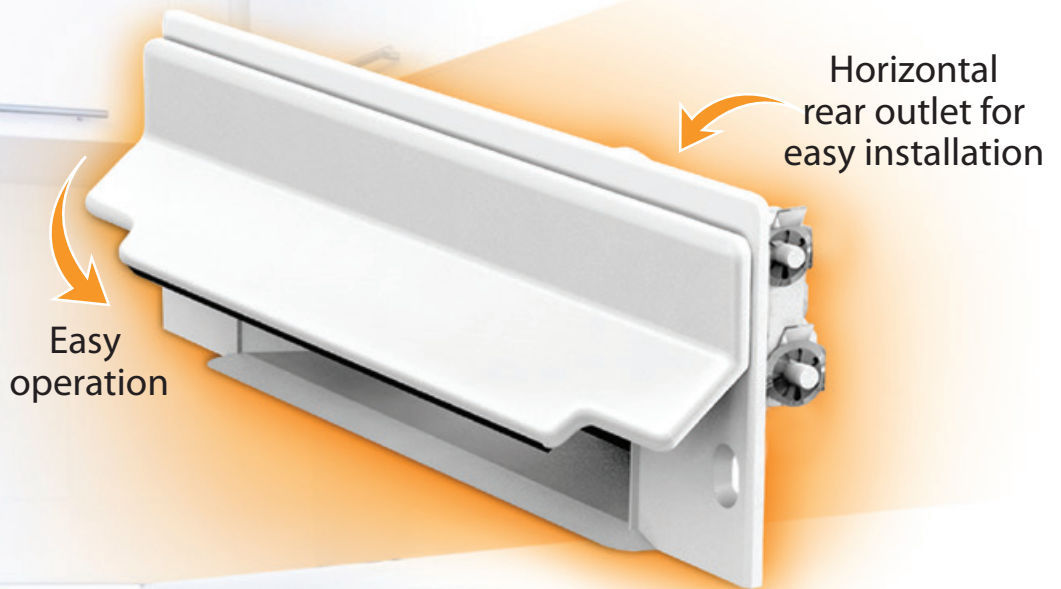


CanSweep®

SWEEP INLET VALVE

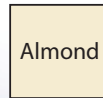


THE EASY OPEN-N-CLOSE VALVE

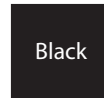
- Modern design with textured appearance
- Large outlet design for maximum airflow
- Zero loss of suction



845625W

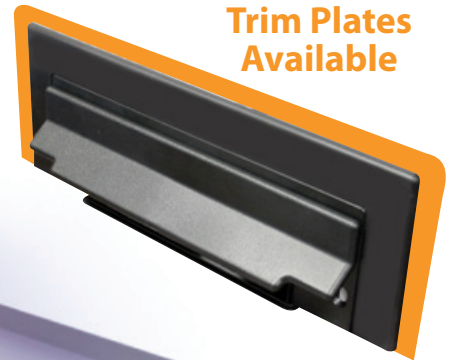


845625A



845625BLK

Trim Plates
Available



Manufactured in Canada

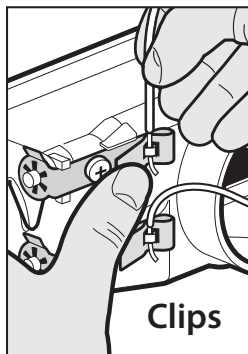
www.vaculine.com

Vaculine®

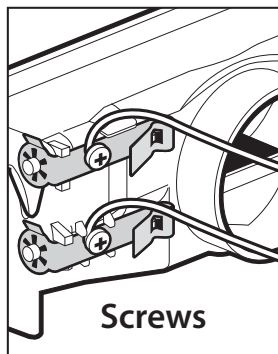


CanSweep®

SWEEP INLET VALVE



OR

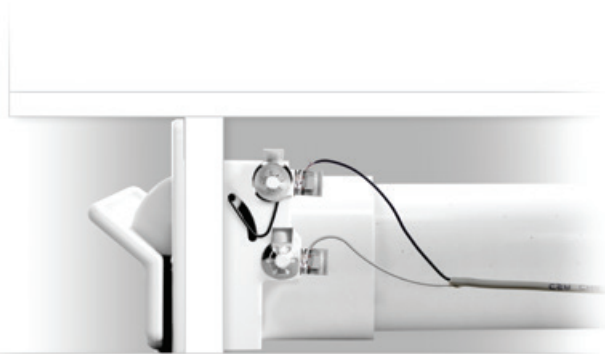


Clips

Screws

Easy & Reliable Wiring Connections

Slide the low volt wires into the CanSweep clips as shown or tighten under screws to complete the wiring connections.



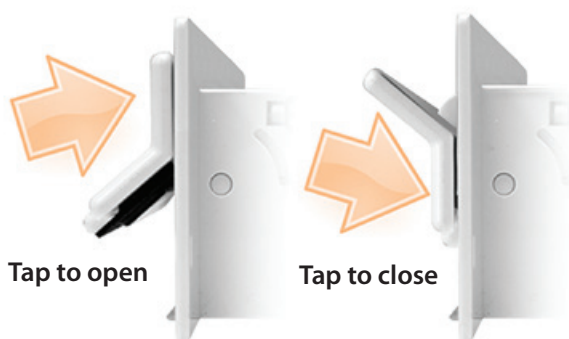
Easy Installation

The horizontal rear outlet allows for easy installation in tight spaces while allowing debris to exit directly into the piping system.



Maximum Airflow

Designed with minimal airflow restriction, allowing maximum airflow for effective cleaning.



Tap to open

Tap to close

Easy Operation

The CanSweep® opens and closes with a simple light toe tap design. Tap up to open and tap down to close.