

ENDURA® GREASE MANAGEMENT

Solids Interceptors



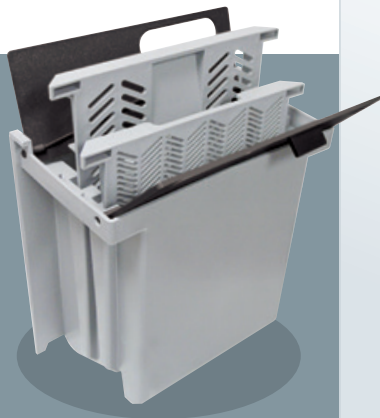
Available in 2", 3" & 4" connection sizes and may accommodate flow rates up to 125 GPM.

The management of solids and debris entering the drain - and ultimately the grease interceptor - is equally as important to manage as the grease itself. Large quantities of solids reduce the working volume of the grease interceptor, significantly impairing performance.

Additionally, debris entering the drain will increase the risk of blockage at the flow control device which could result in costly clogs and back-ups. The Endura Solids interceptors offer solutions for small to medium output applications; using the benefits of the Endura design concept with different internal components to provide proactive prevention of solids-related issues.

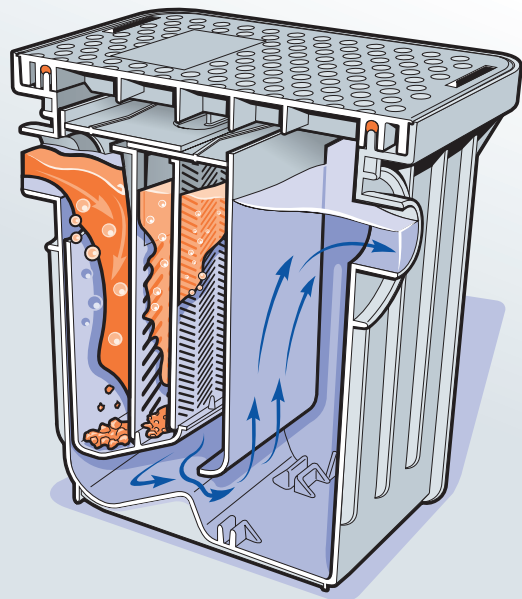
The Endura Solids Basket

- Compatible with full height interceptors 15gpm to 50gpm
- Easy to remove and maintain
- Removable dual screen filtration
- Integrated lifting handles
- Enhanced grease interceptor performance



Common uses:

- Food solids
- Art room waste
- Laundry lint
- Grit and sand
- Hair

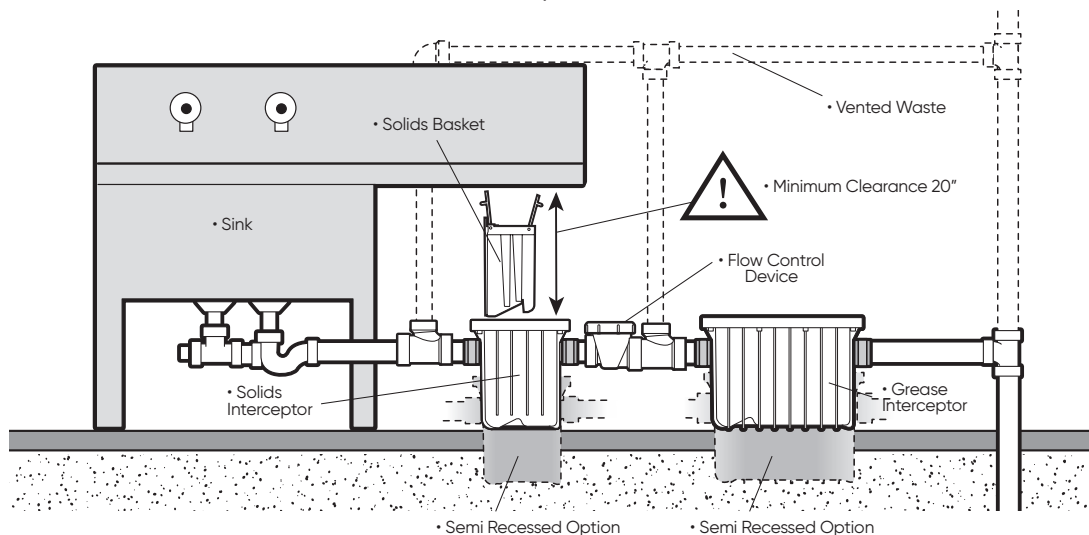


canplas®

www.endurainterceptor.com

ENDURA SOLIDS INTERCEPTOR INSTALLATION INSTRUCTIONS

TYPICAL ON FLOOR/ SEMI-RECESSED



NOTE: Solids Interceptor must be installed before flow control device.

ENDURA® SOLIDS BASKET ACCESSORY INSTALLATION INSTRUCTIONS

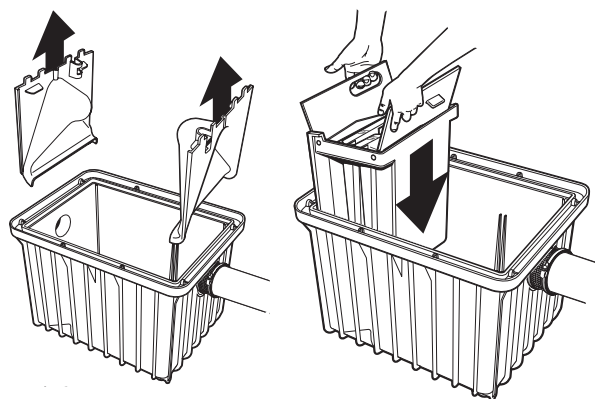
The Solids Basket Accessory is designed to be able to replace the inlet baffle of your Endura® grease interceptor. It can be fitted to any full height model from 15 GPM to 50 GPM.

1. REMOVE BAFFLES

Remove the inlet and outlet baffles from the interceptor by pulling vertically on the lifting locations.

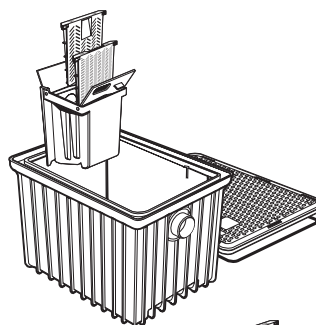
2. INSTALL SOLIDS BASKET

Insert the solids basket accessory into the inlet location pushing it all the way down until it bottoms out.



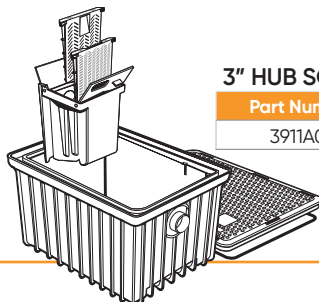
2" HUB SOLIDS INTERCEPTOR

Part Number	Max Flow Rate
3911A02	25 GPM



4" HUB SOLIDS INTERCEPTOR

Part Number	Max Flow Rate
4011A04	125 GPM



3" HUB SOLIDS INTERCEPTOR

Part Number	Max Flow Rate
3911A03	60 GPM



SOLIDS BASKET ACCESSORY

Part Number	Connection Type
3911A-1	N/A

canplas®

Canplas Industries Ltd.
P.O. Box 1800, 500 Veterans Drive
Barrie, Ontario, Canada L4M 4V3

Tel: (705) 726-3361
1-800-461-5300
Fax: (705) 726-2186

