

SIMPLIFIED

NEXT GENERATION E-BOX

FOR ELECTRAVALVE®

Making it possible to stock just **one** SKU!

- Use your own supply of wire
(Compatible with 12 or 14 gauge wire)

"Tab"
to hold the
E-box for
future valve
installation



E-box

- Simply insert wires into the E-box as instructed and snap close to secure
- The E-box connects to the rear of the new ElectraValve®

ELECTRAVALVE®

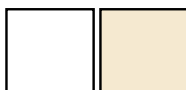


ROUGH-IN KIT

ElectraValve®

775850 Series
Sold separately from
Rough-In Kit

Available Colours



White

Almond



PART #	COLOUR	CTN. QTY.
775850W	White	32
775850A	Almond	32

Mounting
Plate

E-box



Plaster Guard

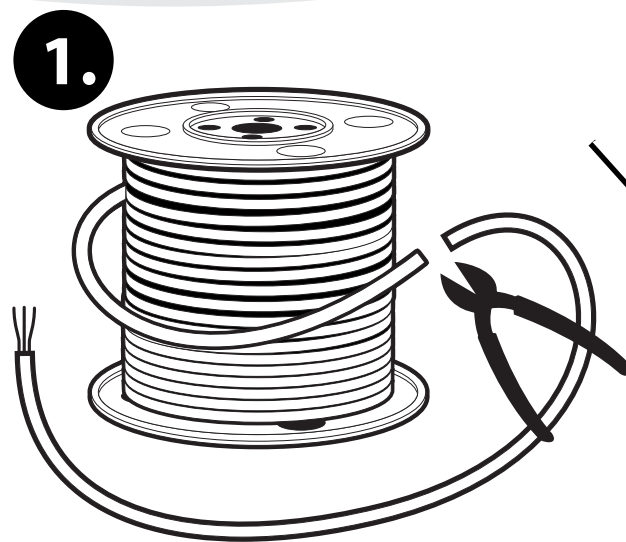


You choose
the wire as
required
Not Included

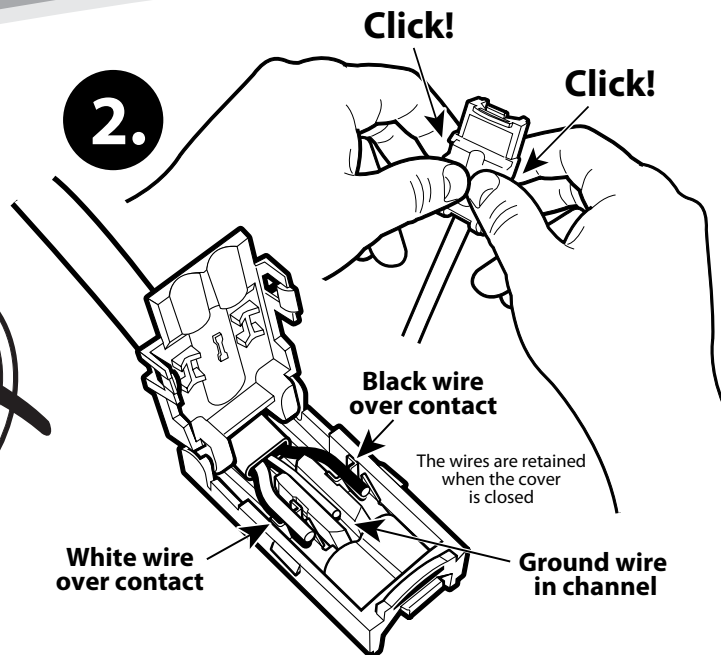
PART #	CTN. QTY.
775851	20

Install Kit
compatible with 12 or
14 gauge wire

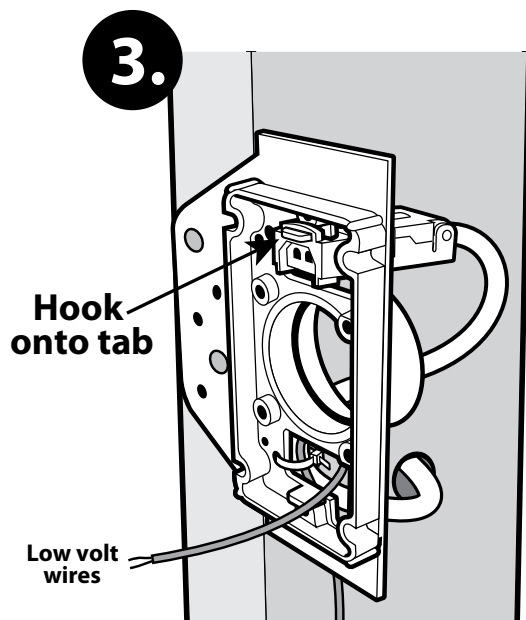
INSTALLATIONS MADE EASIER



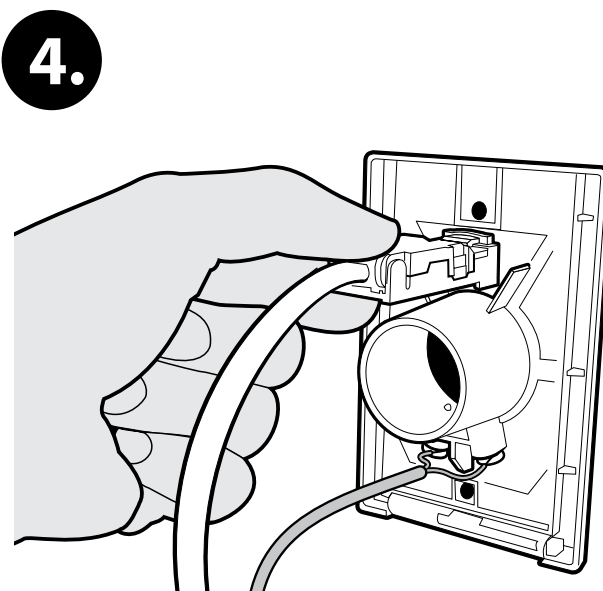
The new E-box allows you to use your wire supply, and choose the length you need.



Simply lay the wires into the metal contacts and snap the cover closed to complete the wire connections.



Install mounting plate to the stud. Hook the E-box plug to the mounting plate tab and wait for drywall completion.



After drywall is complete, plug the E-box into the back of the new ElectraValve® and attach the low volt wires.

See instruction sheet for complete installation guide.